



HAL[®] S3005

Five Year Old Pediatric Simulator

- Simulation Made Easy™
- Proven HAL[®] technology
- Tetherless with wireless communications
- Fully responsive, even during transport
- Wireless streaming audio
- Automatic or instructor control
- New and improved airway features

HAL® S3005 | Five Year Old Pediatric Simulator

Airway

- Oral and nasal intubation
- Use an ET tube or LMA
- Sensors detect depth of intubation
- Unilateral chest rise with right mainstem intubation
- Multiple upper airway sounds synchronized with breathing

New Airway Features

- Realistic geometry, larger epiglottis and better visualization of vocal cords as well as easy intubation
- Improved chest recoil during CPR
- Lung compliance refined to deliver chest rise when ventilating at 20cm H₂O



Breathing

- Control rate and depth of respiration and observe chest rise
- Ventilations measured and logged
- Gastric distention with excess BVM ventilation
- Select independent left and right lung sounds
- Chest rise and lung sounds are synchronized with selectable breathing patterns
- Accommodates assisted ventilation, including BVM and mechanical support
- Unilateral chest rise and multiple breath sounds

Circulation and Color Change

- Multiple heart sounds, rates and intensities
- Chest compressions are measured and logged
- Blood pressure can be taken using a cuff, palpation, or auscultation
- Korotkoff sounds audible between systolic and diastolic pressures
- Color and vital signs respond to hypoxic events and interventions
- Bilateral carotid, brachial and radial pulses operate continuously
- Pulse strengths vary with blood pressure and pulses are synchronized with ECG



Easy to Use

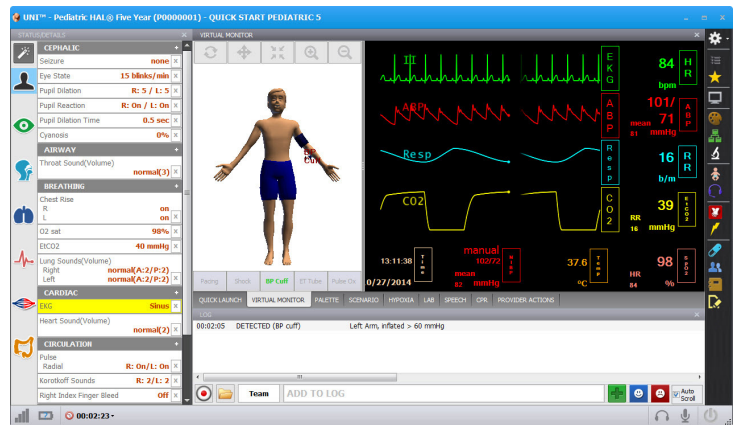
- Instructor Control
- Software control that is powerful and yet intuitive
- Use our scenarios, modify them or quickly create your own

Active Eyes

- Instructor Control
- Open and close
- Select blink rate
- Select pupillary responses to light

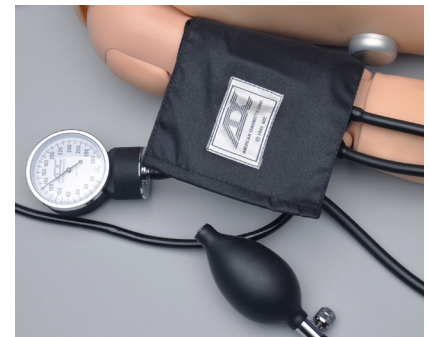
HAL® S3005 | Five Year Old Pediatric Simulator

- Use our preprogrammed scenarios designed by medical professionals. Modify them or quickly create your own
- Use our library of preprogrammed physiologic states, modify them or specify pediatric HAL's condition using this Details page
- Save each condition as a physiologic state on the palette page
- Control Pediatric HAL using a wireless PC to quickly generate multiple life threatening situations and track the actions of care providers



- Select Pediatric HAL's physiologic states from the palette page and combine them to build a scenario
- Select the time Pediatric HAL is in each state
- Build in delays between states or specify smooth transitions
- When activated Pediatric HAL will progress from one state to the next
- Use stylus control to branch to a different state should the team treat Pediatric HAL incorrectly without stopping the scenario
- Invoke Pediatric HAL's extensive library of voice responses at any time and combine them to facilitate a dialogue
- Actions are logged and time stamped for evaluation and debriefing

Clear	Load	Save
Girl w VTach		5 year old female with heart condition is weak pulse and diminished perfusion.
Girl w VTach	+ Item	+ Path
Girl V Tach	00:20	ventricular tachycardia, low BP, low ...
Speech 1	00:01	complaint - Heart jumping
Wait Indefinitely	...	Cardioversion expected...
Speech 2	00:01	urgency - Ouch
Girl slow sinus	00:40	HR 65, vitals start improving
Girl V Tach	00:20	ventricular tachycardia, low BP, low ...



HAL® S3005 | Five Year Old Pediatric Simulator

File Sharing

- Provide students with images such as x-rays, CT scans, lab results, or even multimedia presentations as the scenario progress

Log

- Track the actions of up to six care providers using our menu of responses or write a narrative
- Links with Pro+ recording and debriefing system integrating the log with cameras and patient monitors

Defibrillate, Cardiovert and Pace

- Apply real electrodes and AED pads
- Use real EMS equipment
- See electrical interventions on your AED or our monitor ECG
- View ECGs with physiologic variations generated in real-time
- Synchronized with pulses
- Conductive skin regions
- Apply real electrodes

Motion

- Fully responsive even when carried
- Body convulses on command
- Eyes open / close and feature slow or rapid blinking

Hypoxic Modeling

- Color and vital signs respond to hypoxic events and interventions

Sounds

- Extensive speech library
- Heart sounds include a normal heart as well as splits and murmurs
- Respiratory sounds include normal lungs as well as stridor, bronchial, wheezing, pleural friction and crackles
- Bowel sounds

Venous Access

- IV training arms
- IM sites on shoulders and thighs
- Intraosseous access at tibia

Simulator

- Physical size is 5 years of age
- Self-contained respiratory and circulatory functions
- Active eyes
- NG and otic exercises
- Tracheotomy opening
- Interchangeable genitalia
- Enema administration
- Two way wireless communication
- Internal rechargeable power

Control

- Wireless tablet PC with stylus control
- Communication modules are FCC and CE compliant
- Both physiologic modeling and trending
- Comprehensive performance feedback
- Preprogrammed scenarios
- Build your favorite scenarios

Accessories

- 100-240 VAC charger
- Blood pressure cuff
- Instructions
- CDROM tutorial
- Carrying case

Other

- One year limited warranty; extended warranty to three years
- Installation and training services available

HAL® S3005 S3005

Patented; other patents pending

Options

20in All-in-one Touch Screen PC to Display Vital Signs

S3005.001.R2

12in Touch Screen Tablet to Display Vital Signs

S3005.002

Wireless Streaming Audio

S3005.300

Pro+ Recording and Debriefing System

S3005.211

Automatic “Physiologic” Mode

S3005.600

- Responds to caregiver, instructor and pharmacologic intervention
- Pause and resume anytime
- Add meds using drug template